



*Being the best you can be.*

**Ofsted:**

This week we welcomed Ofsted into school and embraced the opportunity to share the children's learning and the activities that are planned at Fibbersley. A number of the children in KS2 spoke to the inspectors, gave the inspectors a tour of the school and shared their books and learning. All classes were visited during the inspection. The Ofsted team wanted to pass on their sincere thanks for all the feedback from parents and the hard work of the Academy Council, staff and children. Once the Ofsted report is finalised we will make this available to all families.

**Crown Day— wear red, white and blue:**

On Friday 5th May we will be celebrating the forthcoming Coronation of King Charles III. The children will be able to wear red, white, blue, wear a crown, dress up as a princess or enjoy wearing your own clothes. We will be having a shared picnic and hopefully enjoying the sunshine.

**Uniform Reminder:**

Please can you make sure that all uniform is named. Also a reminder that trainers should not be worn for school. If you don't wish to buy new shoes for the final term then plain black pumps will be fine for school. If your child has lost their tie please contact the school office and we will try to replace missing ties. All children need a PE kit for school— please see the uniform page on the school website for additional information.

Our school uniform shop will be open for business as usual this term. Any donations of unwanted school uniform would be greatly appreciated. Remember there is no charge for the school uniform from our shop.

**NEU Industrial Action:**

Further industrial action is scheduled for Tuesday 2nd May. If your child's class is affected by the action you will be contacted through ClassCharts. If you haven't accessed your ClassCharts account please contact the school office.

Wishing you all a very happy bank holiday weekend.

Mrs Sugars



Important reminder—we are a nut free school

No nuts or snacks containing nuts, are allowed in school. This is to keep our pupils safe who have a Nut allergy. Please do not send your child with Nutella/ chocolate spread sandwiches. Thankyou.

**Communication:** If you have an issue or question, please ensure that you follow the school's communication policy and make contact with your **child's class teacher** via Classcharts, telephone or email in the first instance. If you then require additional support, please ask to speak to the **Year Leader**, then a member of SLT.



*Being the best you can be.*

## Absences

If your child will not be in school, please call the school office *each* morning of their absence to record it. State their name, class number and the reason for absence.

Please **do not** send absence message via class charts.

**School Time:** Start of the day-main gates open at 8.40am and classroom doors will open at 8,45am. School starts at 8.55am. End of the day– main gates will open at 3.10am. The school day ends at 3,15pm. No-one, including siblings under the age of 16 are allowed to drop off or collect children from school. Thankyou.

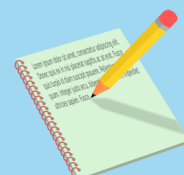
**To adhere to our school policy , if your child has sickness or tummy upset, please keep them home for 2 days from the last bout of illness.**

## Medications/Inhalers

Please bring any medications through to the school office. All medications/inhalers need to be in their original box, in date and labelled with the child's name. A pupil medication form will need to be completed at each new term.

### Dates for your Diary

Every Friday	Sports coach with Years 3 and 4
Every Wednesday	Year 4 & 5 Swimming
Monday 1st May	May Day Bank Holiday—School Closed
Friday 5th May	Coronation picnic– wear red, white, blue, make a crown, dress as a Queen, King.
Friday 5th May	Little Foxes Stay & Play (Parents of our Nursery children) 1.25—3.00pm
Monday 8th May	Bank Holiday– Kings Coronation—School Closed
Tuesday 9th May	Year 6 SATs start
Friday 12th May	Little Foxes Stay & Play (Parents of our Nursery children) 1.25—3.00pm
Friday 12th May	Uniform swap-shop 3.00pm—3.30pm
Tuesday 16th May	Year 2 SATs start
Friday 19th May	Little Foxes Stay & Play (Parents of our Nursery children) 1.25—3.00pm
Thursday 25th May	School Closes for Half Term
Friday 26th May	School Closed—Training Day
Monday 29th May-Friday 2nd June	Half Term
Monday 5th June	Back to School.
Friday 30th June	School Closed– Training Day
Thursday 6th July	Year 2—Western Super-Mare Trip
Wednesday 19th July	Year 6 Leavers Party
Friday 21st July	Year 6—Drayton Manor Trip
Tuesday 25th July	End of Term. School Closes at 12 noon





*Being the best you can be.*

## Our Fibbersley Stars for this week.

### Well done to...

RA	Vinayak & Emmanuel	2S	Simran & Oliver	4L	Summer & Kira-Leigh
RH	Ariella & Joby	2X	Everyone!	5A	Lacey & Billy
RG	Carlos & Believe	3D	Zion & Musa, Zak & Ruby	5H	Logan & Sienna
1H	Alicja & Freya	3W	Carte & Imogen	5R	Gracie-Mai & Liam
1P	Ellis & Lottie	3M	Cody-Jay & Emily	6B	Lucas & Trent
1W	Almir & Manroop	4D	Zander & Macey-Jai	6M	Texas & Monsoor
2B	Lexi & Noah	4P	Andrzej & Larissa	6Z	Lea J & Shayne
Cove	Joshua, Jaxon & Blake				

All our Fibbersley Stars will receive their certificates in assembly on Friday.



### Congratulations to the classes with the highest attendance in each Year Group.

**RA 97%**

**1W 95.2%**

**2S 98%**

**3M 98.3%**

**4L 98.1%**

**5A 98.4%**

**6Z 93.7%**

Our school target is 93%. Attendance matters!



*Being the best you can be.*

**Well done!!!**

We're delighted to share that Igor in Year 6 was our only pupil who was selected to participate in the bonus round for the Primary Mathematics Challenge this year - and has achieved a Bronze level certificate.

Well done Igor - this is a fantastic achievement!

He's been listed on the Winners List: <https://www.m-a.org.uk/resources/BR2023.pdf>

**PRIMARY MATHEMATICS CHALLENGE**

**THE RESULTS ARE IN...**

**CONGRATULATIONS TO EVERYONE**

**WHO TOOK PART IN THE BONUS ROUND**

Nursery

Do you require a Nursery place for September?

If your child's date of birth is between 01/09/19 to 31/08/20 please apply. You can collect an application pack from the school office.



Polite Notice

Please refrain from allowing your children to come to school on electric scooters. We have had a number of reports of children riding around on the school carpark unsupervised. Scooters of any kind should not be ridden on the school grounds. All children have to be accompanied by a parent/carer to and from school if they are Year 5 and under.

Thankyou



LIMITED PLACES BOOK NOW TO AVOID DISAPPOINTMENT!

# SUMMER School Transition Camp

**26 - 28 JULY**

Venue: Darlaston Ln, Willenhall W14 7BL

**THE TRANSITION PROGRAMME WILL INCLUDE:**

**FAMILIARISATION AND CONFIDENCE BUILDING**  
Aids school familiarisation, friendships and confidence building for the start of Secondary School. Pupils are engaged through Orientation Treasure Hunts, Arts, Team Building and Sports Activities.

**ENGLISH MATHS AND STEM ACTIVITIES**  
Students will take part in a range of literacy activities with a focus on non-fiction and fiction writing. Fun maths games will enable students to practice their number skills and students will get the chance to design and create a STEM project.

Booking via the below link:  
<https://forms.office.com/Pages/ResponsePage.aspx?id=ZYq46hH-b0ukSOSznMvWERO9-0ZZhdMnB3B8h7VcRNURjNYWU85U1ZHvU1KM1jHRjZSR0U0QOVfV4u>

**Submission deadline - Monday 5th June**

LMP ACTION  
COMMUNITY INTEREST COMPANY

**JOIN WALSALL COLLEGE TO CELEBRATE THE CORONATION OF KING CHARLES WITH AFTERNOON TEA!**

Come join us on Friday 5th May at our Pleck Library Campus for afternoon tea to celebrate the King's Coronation! Take part in fun activities and learn more about the Royal Family and King Charles over tea and cakes!

This two hour event will start promptly at 12pm and places are limited so make sure to book your \*free space! We're located at: Pleck Library, Darlaston Road, WS2 9RE

To register your interest in this event call 01922 657000 or email [CommunityDevelopment@walsallcollege.ac.uk](mailto:CommunityDevelopment@walsallcollege.ac.uk)  
 \*Free for households living in the West Midlands area with income below £30,000 per year