



*Being the best you can be.*

Dear Parents and Carers,

### School traffic update:

As you know school and our families have become increasingly concerned about the parking and traffic outside of school and sadly we have had two incidents during the last couple of months that have involved our families. This week I am please to announce that a meeting was held in school to discuss possible strategies to improve road safety by school. Councillors

Horton and Lathum, representatives from Walsall Council Road Safety Team, Caroline Bodan (Chair Academy Councillor) and school decided on the following action:

- School will take part in a a number of different road safety strategies promoted by Walsall Council
- Further yellow zigzag lines will be painted to make a bigger keep clear zone.
- Additional signs will be put outside school
- The cameras outside of school will continue to remind parents to park safely and the traffic wardens will continue to monitor parking outside school.

### Phonics update:

Well done to all our younger children who are embracing our "Little Wandle" phonics scheme. Ask your children about shuffle time, 1,2,3 show me, chunking and many more of our phonic rhymes. Look out for the date of our parents session where we look forward to sharing the scheme with you.

### Number Day:

Don't forget Friday 2nd February is number day. Children are invited to come dressed as a number and complete a variety of fun activities.

Have a great weekend

Mrs Sugars



### Courage

We show courage by being ambitious, challenging ourselves and others to achieve more. We take on challenges with enthusiasm, determination, and resilience, learning from failures.



Important reminder—we are a  
nut free school

**Communication:** If you have an issue or question, please ensure that you follow the school's communication policy and make contact with your child's class teacher via Class-charts, telephone or email in the first instance. If you then require additional support, please ask to speak to the **Year Leader**, then a member of SLT.



*Being the best you can be.*

## **Absences**

If your child will not be in school, please call the school office *each* morning of their absence to record it. State their name, class number and the reason for absence.

Please **do not** send absence message via class charts.

**School Time:** Start of the day-main gates open at 8.40am and classroom doors will open at 8.45am. School starts at 8.55am. End of the day– main gates will open at 3.10pm. The school day ends at 3.15pm. No-one, including siblings under the age of 16 are allowed to drop off or collect children from school. Thankyou.

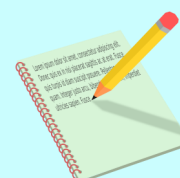
**To adhere to our school policy , if your child has sickness or tummy upset, please keep them home for 2 days from the last bout of illness.**

## **Medications/Inhalers**

Please bring any medications through to the school office. All medications/inhalers need to be in their original box, in date and labelled with the child's name. A pupil medication form will need to be completed at each new term.

### **Dates for your Diary**

Friday 2nd February	School uniform shop 3.15pm (no cost)
Friday 2nd February	Number Day– dress up in anything related to numbers (details to follow)
Wednesday 7th, 8th, 9th February	Year 3 canal trip
Friday 9th February	school closes at 3.15pm for Half Term
Wednesday 20th February	Year 5 & 6 Boys Football– Walsall E-Act 3.00—5.45pm
Tuesday 27th February	Martial Arts club starts in school
Wednesday 28th February	Year 5 & 6 Girls Football—Walsall E-Act 3.00—5.45pm



## **PE KIT Reminders**

All children should have a PE kit in school on their PE days, if you are unsure when these are please check with your child's class teacher. The PE kit expectations are:

- Plain white T-shirt
- Plain black socks
- Black PE pumps or plain black/white trainers
- Grey tracksuit (for winter)
- Plain black shorts



*Being the best you can be.*

## Our Fibbersley Stars for this week.

Well done to...

R 1	Baani & Jayden	2 2	Aishleen & Ansh	4 3	Kobi-James & Andre
R 2	Lmaia & Sondos	2 3	Chase & Simrat	5 1	Isabella & Oliver
R 3	Miley & Antonina	3 1	Emmanuella & Rihaan	5 2	Tommy & Rita
1 1	Hananveer & Khary	3 2	Lexie & Eshan	5 3	Cecee & Mason F
1 2	Ariella & Tehila	3 3	Gursimran & Arshdeep	6 1	Muhammad A & Lewis
1 3	Sophia & Leo	4 1	Ollie & Rosie	6 2	Beau & Lacey
2 1	Monty & Hashim	4 2		6 3	Lily H & Amelia D
		Nursery	Vaani & Bentley-Jackson		



All our Fibbersley Stars will receive their certificates in assembly on Friday.

**Congratulations to the classes with the highest attendance in each Year Group.**

**R 1 93.7%**

**1 2 92.7%**

**2 1 93.7%**

**3 3 95%**

**4 1 94%**

**5 3 94.9%**

**6 1 94.2%**

**Our school target is 93%. Attendance matters!**



**Fibbersley Park  
Academy**

*Being the best you can be.*



26th January 2024  
@fibparkacademy

**School Crossing Patrol Wardens (Various Locations) - Ref Salary G3: £11.98 - £12.38 per hour (term time)**

Are you interested in the responsible, rewarding and worthwhile job of helping Walsall's school children to cross busy roads on their journey to and from school?

A job that makes a real difference?

We have opportunities for School Crossing Patrol Wardens at various locations across the Walsall Borough. The vacancies require morning and afternoon working on a term-time basis. **Opportunities are currently available at:**

**Fibbersley Park Primary** Noose Lane, South of Fibbersley Park School, WV13 3BB 5:25 hours per week

**Fibbersley Park Primary** Wellington Place, Whitehall at Thorne Road WV13 3AB 5:50 hours per week

**Fibbersley Park Primary** Noose Lane at Lakeside Close, WV13 3BU 5:25 hours per week

\*Special conditions: Due to the intrinsic nature of the work of a School Crossing Patrol Warden, and the identifiable health and safety risks involved, this post falls within the exception to the statutory bar on requesting pre-employment health information.

This post is covered by the Government's Code of Practice on the English Language Fluency Duty for public sector workers. The post holder will be required to communicate verbally with customers and provide advice and/or information in accurate spoken English.

**View Job Description and Employee Specification**

**View Information for Applicants**

Walsall Council takes seriously the responsibility to safeguard and promote the welfare of all the children and young people entrusted to our care and it is our expectation that all staff will share this commitment. Completion of an enhanced Disclosure & Barring Service (DBS) check is a requirement for working with children and young people.

Please apply on the WMJobs website.

**Closing Date: Friday 9th February 2024**



Thankyou to Our PFA Team who have purchased Goal Nets and footballs for all our EYFS and KS1 children!