



**Fibbersley Park
Academy**

Being the best you can be.

21st November 2025

facebook



Dear Parents and Carers,

This week we've truly experienced *every* kind of weather — sunshine, rain, snow and a sudden drop in temperature! Thank you to all the children who are bringing their wellies to school or borrowing a pair from our welly wardrobe. However, a number of children are still getting very muddy, so please remember to send in a change of shoes or a pair of wellies.

During our OPAL assembly, Mrs Kennedy launched our exciting new large loose-parts activity, which the children are already looking forward to exploring. Our new gates are also finally in place and will be used for the first time today. Please take a moment to read the notice on Class Charts regarding gate opening times. As always, if you have any questions, please don't hesitate to contact the school office.

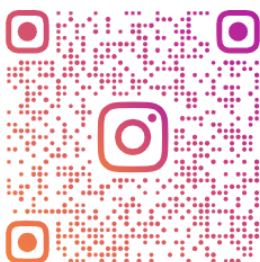
This week the whole school enjoyed an incredible concert performed by the *Stringcredibles*, featuring one of our amazing dads playing the saxophone. The children absolutely loved the experience! We were also delighted to welcome Councillor Cheema, who joined us for the performance. A huge thank you to our Values Champions for looking after our visitor so thoughtfully.

As a large school, parking continues to be a challenge at the start and end of the day. Please be aware that the 442 car park is private, and we have been asked not to park in this area. We will continue to work with the council to explore solutions that support safer traffic flow and parking. Please also make use of the staggered start from **8.40–8.55am** to help ease congestion.

Next week, Year 1 are off to the Art Gallery — we can't wait to hear all about their visit!

Have a great weekend

Mrs Sugars



FIBBERSLEY PARK



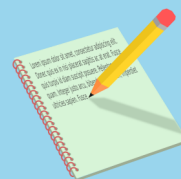
Instagram





Dates for your Diary

Monday 24th November	Year 1—Trip to Art Gallery
Friday 28th November	Mrs Hayer class 4 1- assembly 9am (parents invited) Uniform Shop 3.00pm—3.15pm
Friday 5th December	Flu vaccinations
Monday 8th December	Reception Trip—Ash End Farm - Visiting Santa
Wed 3rd— Fri 5th December	Year 6 Residential
Friday 5th December	Mr Hancock class 1 2- assembly (parents invited)
Thurs 11th December	Year 2—Christmas Production 9am -10am Year 1— Christmas Production 2pm—3pm
Friday 12th December	Year 1—Christmas Production 9am—10am Year 2—Christmas Production 2pm—3pm AM Nursery—Christmas Show 11am—11.45am PM Nursery—Christmas Show 2.15pm—3.00pm Uniform Shop 3.15pm—3.30pm
Mon 15th & Tues 16th December	Reception Nativity 2pm—3pm
Tuesday 16th December	KS1—Santa's Grotto
Tuesday 16th December	Year 3 & 5 Christmas Concert—10.15am
Wednesday 17th December	Year 3 & 5 Christmas Concert—2.15pm
Thursday 18th December	Christmas Dinner
Friday 19th December	Christmas Breakfast— school closes at 12pm





Our Fibbersley Stars for this week.

Well done to...

R 1	Mina-Victor & Elena	2 2	Tyger & Kelsey	4 3	Arnie & Jaskirat
R 2	Tyra & Avianna	2 3		5 1	Gracie & Isla G
R 3	Kobe & Rae	3 1		5 2	
1 1	Arlo & Kirtan	3 2	Freddie, Hattie & Vinayak	5 3	Lillah & Awwal
1 2		3 3	Jerrell & Essa	6 1	Jiya H & Bryan-Kelly
1 3		4 1	Ayla & Almir	6 2	Jovanpreet & Olivia
2 1	Jasleen & Antonina	4 2	Ella & Mollie	6 3	
Cove 1	Nancy	Cove 2 & 3	Chester & Simran	Nursery	Harry-Jack & Oscar D

Congratulations to the classes with the highest attendance in each Year Group

R 1 94% **1 2 92%** **2 3 94%** **3 2 95%**
4 3 95% **5 1 95%** **6 2 95%**

Our school target is 93%. Attendance matters!

Communication: If you have an issue or question, please ensure that you follow the school's communication policy and make contact with your child's class teacher via Class-charts, telephone or email in the first instance. If you then require additional support, please ask to speak to the **Year Leader**, then a member of SLT.



**Fibbersley Park
Academy**

Being the best you can be.



School Meals—IMPORTANT—Please Read

We encourage you to book your child's school meal via **Parent Pay** in advance or up to the same morning **before 8 AM**. This way you will know what your child is eating at school, and also stay on track with your payments, stay in credit and also save time if you child as come through the office and missed registration. **Please be aware, If you pay for your child's meals and pre-book —if they are absent from school you will have to cancel the meal for days absent via Parent Pay or meals will still be charged to your account.**

Not sure how to do this?

If you are in any doubt how to book, (Its easy and more convenient once you know how!) please call the school office and talk to a member of staff who will happily show you how.

If you have to pay for your Child's school meals please can you ensure your account is kept in credit.

Should there be any problems with payments please contact our Finance Assistant Wendy Lewis via main reception.

Absences and Appointments

If your child will not be in school, please call the school office *each* morning of their absence to record it. State their name, class number and the reason for absence. If your child as a medical appointment, please inform the office in advance, as we may require medical evidence to avoid unauthorised absence marks, and/or picking your child up early if its a regular occurrence.

Please do not send absence messages via class charts.

School Time: Start of the day-main gates open at 8.40am and classroom doors will open at 8,45am. School starts at 8.55am. End of the day– main gates will open at 3.10am. The school day ends at 3,15pm. No-one, including siblings under the age of 16 are allowed to drop off or collect children from school. Thankyou.

To adhere to our school policy , if your child has sickness or tummy upset, please keep them home for 2 days After the last bout of illness.

Medications/Inhalers

Please bring any medications through to the school office. All medications/inhalers need to be in their original box, in date and labelled with the child's name. Medicines purchased from pharmacy require a label printed at pharmacy with the child's name on. A pupil medication form will need to be completed at each new term.

Christmas Raffle



Order a Christmas lunch
and your name will be
entered into the
Christmas raffle.



Win a chocolate Hamper





St Stephen's Church
Presents

Christmas Fair

- Many Stalls (incl. White Elephant)
- Games & Great Prizes!
- Free Kid's Christmas Crafts
- Hot Food ● Raffle
- Delicious cakes

FUN FOR THE WHOLE FAMILY!

29th
NOVEMBER
12-2PM

AT: ST STEPHEN'S CHURCH, WOLVERHAMPTON STREET, WILLENHALL WV13 2PS